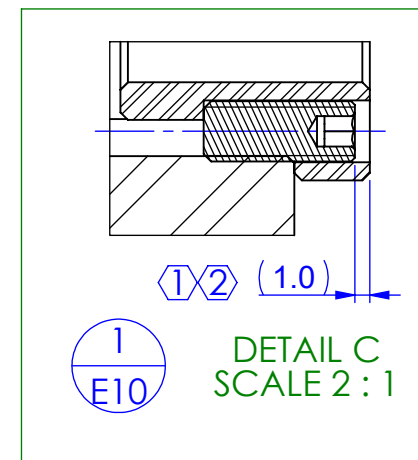
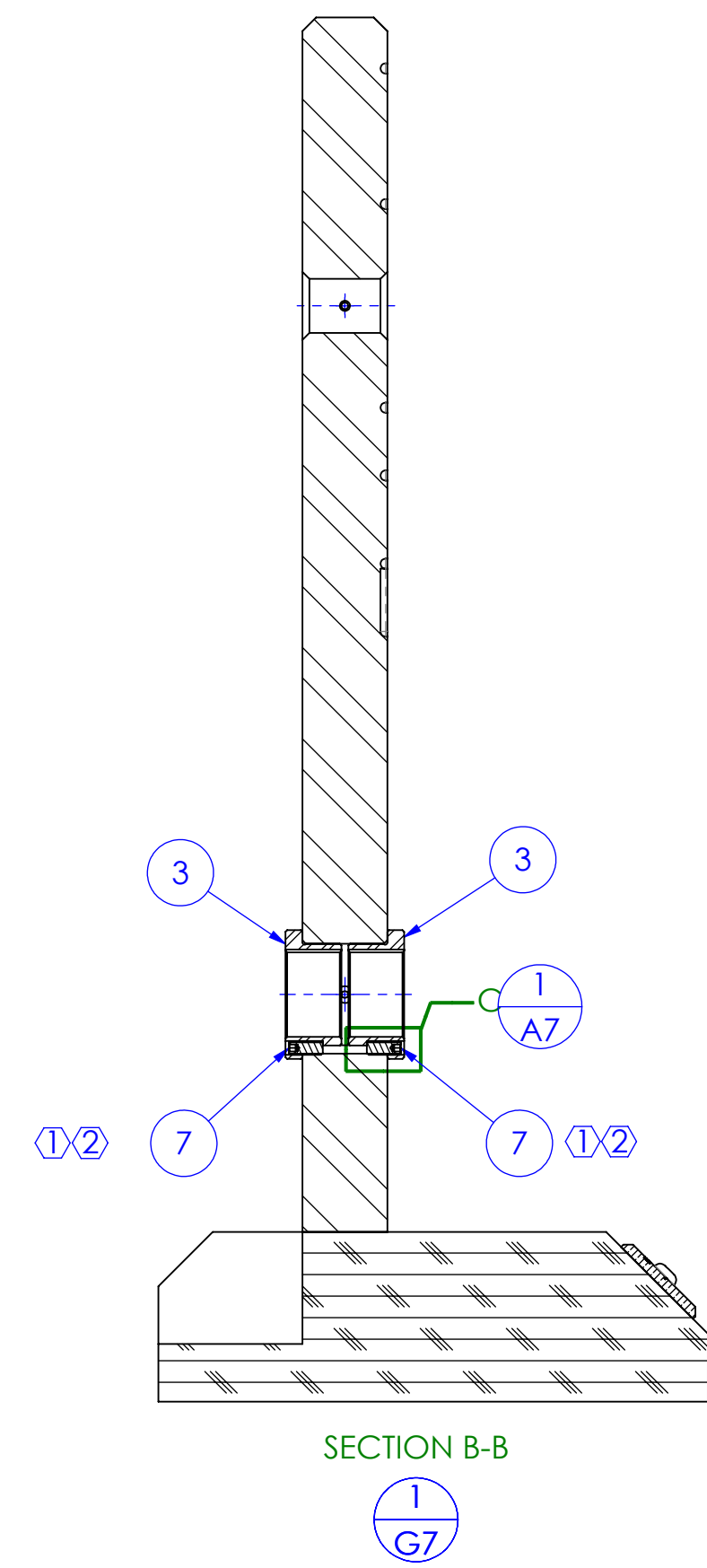
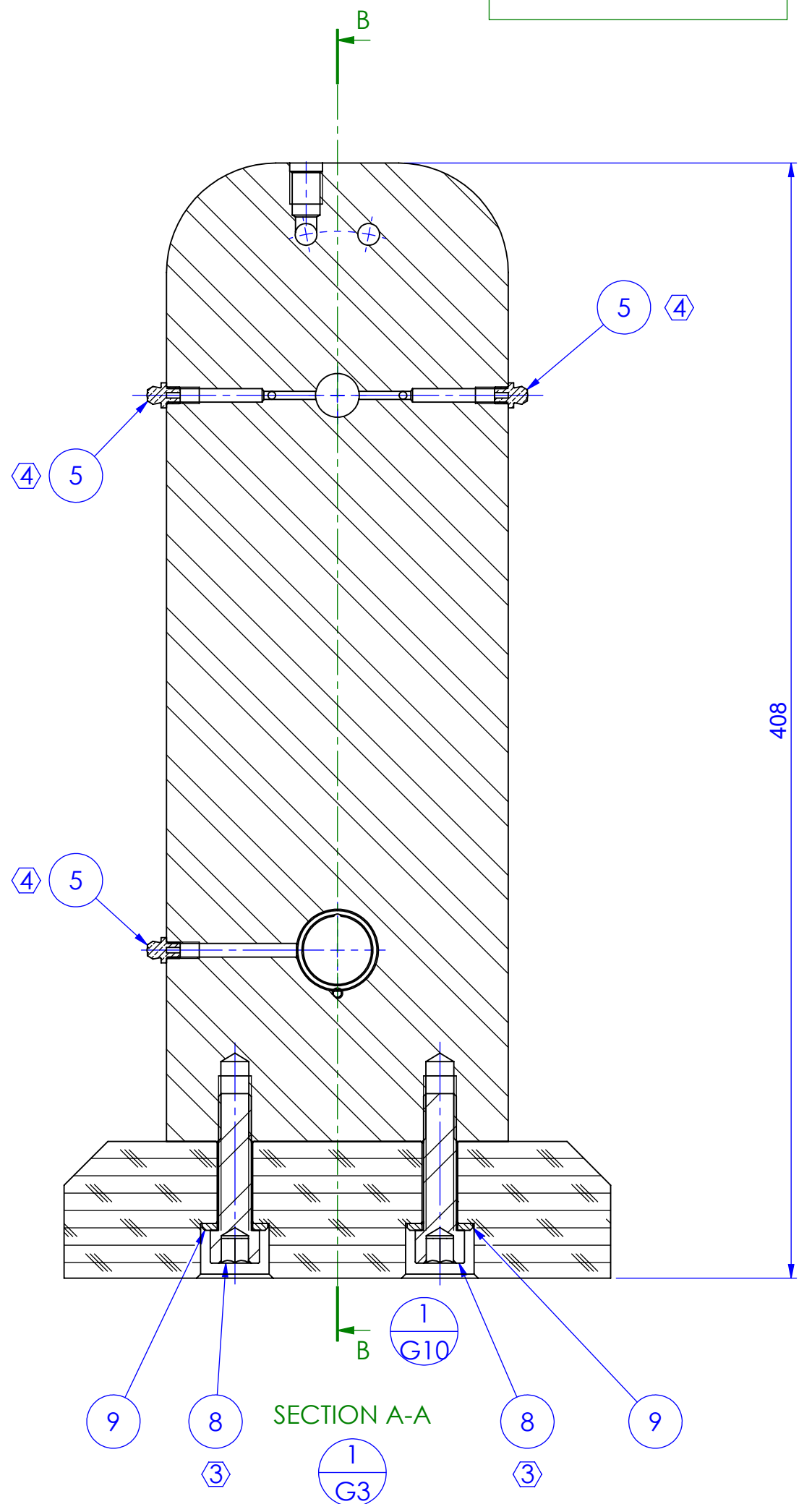
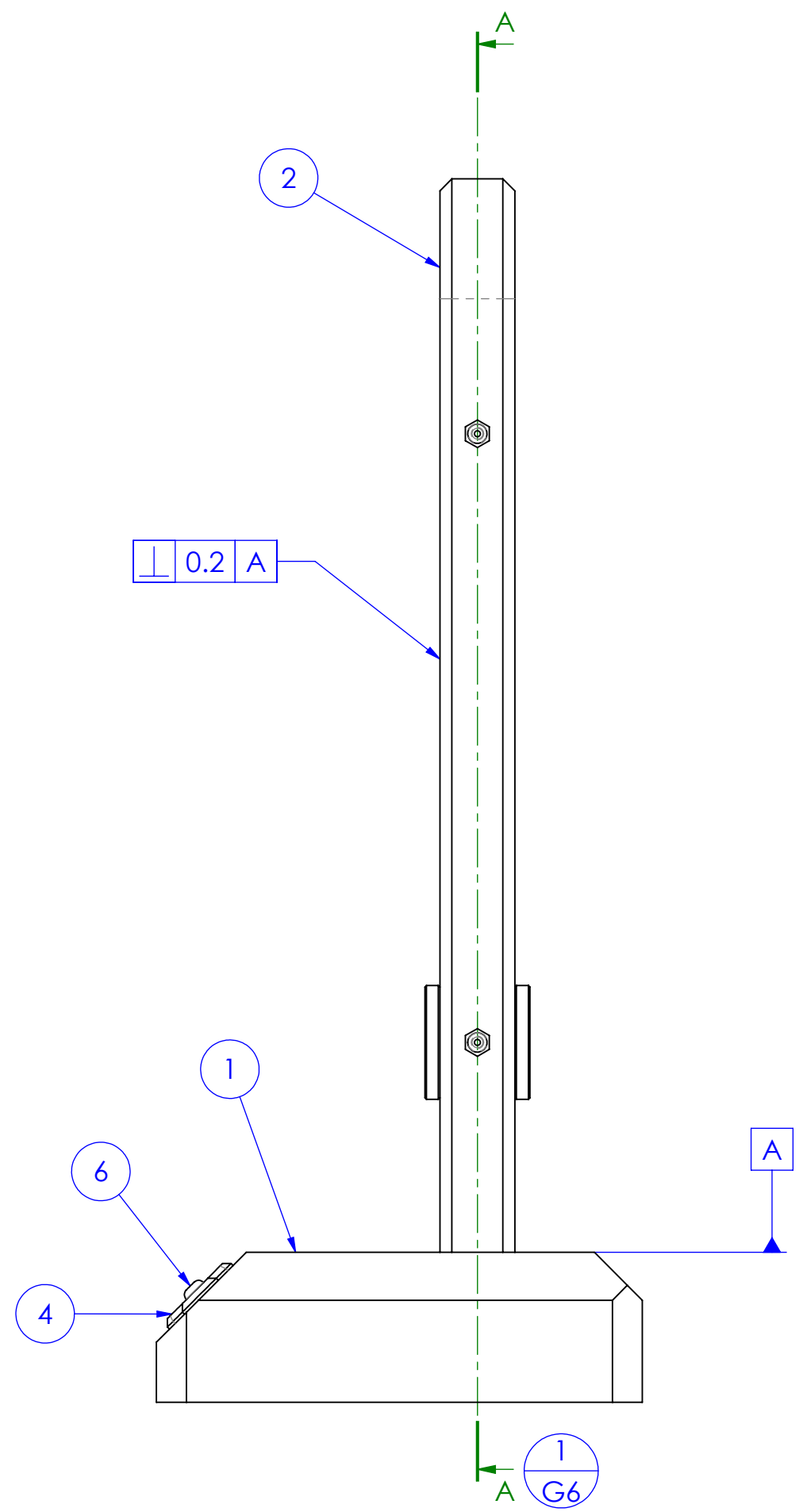


REVISIONS				
REV.	DESCRIPTION	DATE	DRAWN	APPROVED
1	FIRST ISSUE	10-DEC-2019	TB	WHC

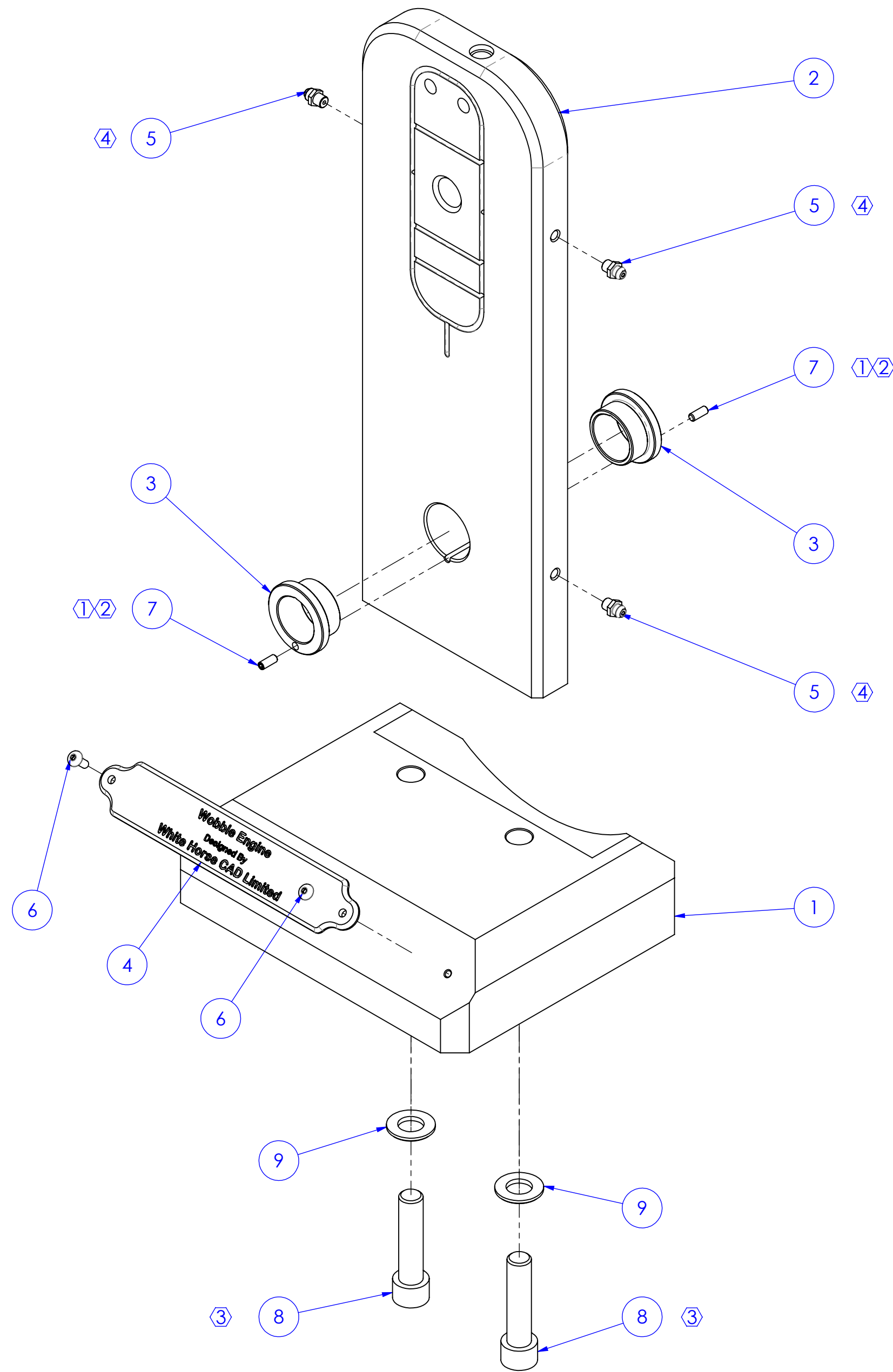


ITEM NO.	PART NUMBER	DESCRIPTION	Material	QTY.
1	P9999-13101	Base	Mahogany	1
2	P9999-13102	Vertical Support	01 Tool Steel (Gauge Plate)	1
3	P9999-13103	Flywheel Bearing	Phospher Bronze	2
4	P9999-13104	Plaque	Brass	1
5	M6-NIP	M6 Grease Nipple	Stainless Steel 304 A2	3
6	M4-10-SKT-BUT	M4 X 10 Socket Button Head	Stainless Steel 304 A2	2
7	M4-10-SKT SET	M4 X 10 Socket Set	Stainless Steel 304 A2	2
8	M12-50-SKT-CAP	M12 X 50 Socket Cap	Stainless Steel 304 A2	2
9	M12-WASH	M12 Washer - Form A	Stainless Steel 304 A2	2



- NOTES
- ① TIGHTEN M4 SKT SET SCREWS (7) TO 2NM MAX. TO SECURE FLYWHEEN BEARING (3)
 - ② M4 SKT SET SCREWS (7) TO BE SUB FLUSH OF THE FLYWHEEL BEARING (3)
 - ③ TIGHTEN M12 SKT SET SCREWS (8) TO 110NM MAX.
 - ④ TIGHTEN M6 GREASE NIPPLES (5) TO 15NM MAX.

White Horse CAD Ltd Design Rights 2019 Tel: +44 (0) 1373 801 803 www.whitehorsecad.com		Material: See Part Drawings	Project: Wobble Engine	Title: Base Sub Assembly	Drawing Number: P9999-13001	Scale: 1:2	Rev: 1	Name: TB	Date: 10-Dec-2019	Weight: 9.26Kg	
											Material Standard: (If Required)
THIRD ANGLE PROJECTION											



White Horse CAD Ltd
Design Rights 2019
Tel: +44 (0) 1373 801 803
www.whitehorsecad.com



Material: See Part Drawings

Material Standard: (If Required)
Finish: See Part Drawings

Project: Wobble Engine
Title: Base Sub Assembly

THIRD ANGLE PROJECTION



Unspecified Dimensions
X ± 1mm
XX ± 0.3mm
XXX ± 0.1mm

Drawing Number
P9999-13001

All Dimensions in mm
DO NOT SCALE

Paper Size
A2

Scale
1:2

Sheet
2 of 2

Rev
1

Name	Date	Weight
Drawn TB	10-Dec-2019	9.26Kg
Checked WHC	10-Dec-2019	
Approved WHC	10-Dec-2019	

Surface Finish:
General: (Ra) 1.6 µm